



ProcessLite Data Sheet

Process Design Data

Model design Forms

Design Analytics

Process Integration

Exception Management

Work Queues Portal

Dashboards Audit Trails

Document Management

Execution Management

Plug-able Security Model

Plug-able Event Actions

Administration

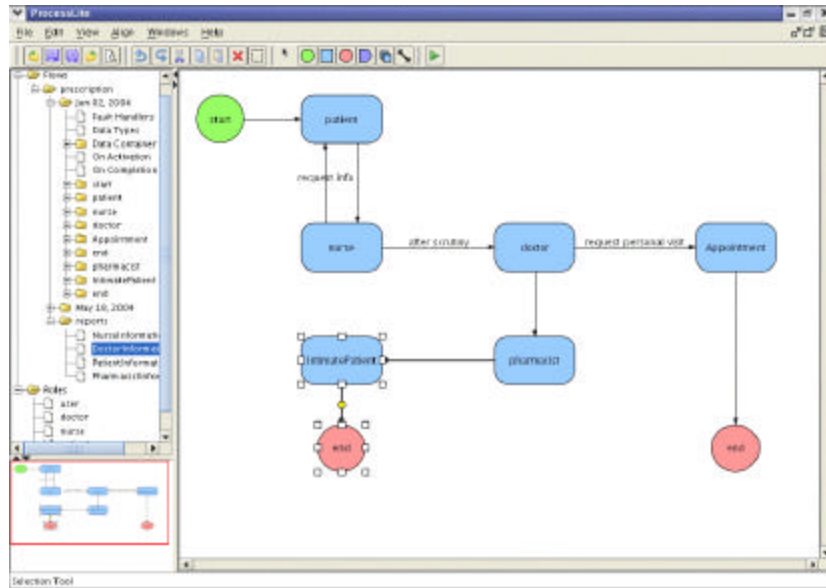
Versioning Execution

Management Java Like

Expressions Java

language API Highly

Scalable



Process management is a vital part of enterprise software systems that integrate cross-application and cross-company process flows while staying responsive to changes in business strategy. Total OutSource ProcessLite is a lightweight Process Management solution that addresses this need. It comprises of functionality to design, deploy and manage the processes. ProcessLite provides the ability to define the processes in an easy to use graphical interface empowering business user to define, change and control process.

Process Design

The process designer of ProcessLite is GUI based studio that is very intuitive, quick and easy to use. Studio includes a full range of editing tools like cut, copy, and paste, redo, undo, print preview etc. The MDI (multiple document interface) layout along with tiling, cascading and mini view helps the user to have a clutter free desktop. The auto refreshing process-explorer along with the single click property editor makes the process of editing flows very intuitive.

Data Model design

The integrated data model design capability of ProcessLite lets you design data models that are very intuitive, quick and easy to use. ProcessLite not only supports primitives as part of each activity, but also Array, Enumeration, Choice, File data fields as process data. The ability to create complex data structures from these data fields provides a very powerful capability to define any data model. Visibility and availability of data from an activity are same as the activity nesting. This when combined with the ability of the data connector to map data from one activity to another results in a seamless and controlled flow of data between activities.

Forms Design

The integrated forms designer of ProcessLite is properties based Forms designer that lets you design forms very quickly and intuitively. The forms are automatically bound to the variables. The forms designer not only supports primitive data types but also file, array, choice and list. Rules for validation and constraint enforcement can be added as part of the form design.

Analytics

The reports designer of ProcessLite lets a business user define reports and charts by using drag and drop components. It provides a seamless integration with process data and metadata. Supports a variety of charts.

Process Integration

ProcessLite provides means for seamless integration of inter enterprise processes. It provides ability to invoke java components. Support for Messaging, Web Services and UDDI are provided as part of the Total OutSource Process Server Product.

Exception Management

ProcessLite provides effective exception Mgmt mechanism. Exception resolution is treated as an integral part of process management. It provides the ability to route, investigate and manage exceptions.

Work Queues

The work queues in ProcessLite are designed to increase your efficiency. They are easy to see and easy to see. The queues can be either role based or user based.

Portal

ProcessLite Portal is a web-based portal that can be accessed from anywhere. It is a JSP/servlet J2EE standards based portal. You can leverage it for your existing web systems or use on a standalone basis.

Dashboards

ProcessLite Dashboards provide an effective mechanism for monitoring. It provides a snapshot of relevant instances. The dashboards can be role based and user based. The dashboards are self administrable.

Audit Trails

ProcessLite audit trails provide you a complete history of an instance. It provides information as to who accessed a particular instance, document and when. It also provides information as to who modified an instance and what.

Document Management

ProcessLite integrates the Enterprise DMS services with the process management. There by letting you take one more step towards a true paperless office. File as a type of process data lets you achieve the DMS functionality very transparently. It includes content-based search and text index of scanned documents.

Execution Management

ProcessLite provides a fine-grained control on execution. It provides ability to re-route activities, load balance activities, redo an activity, skip an activity, and suspend an activity or an instance.

Plug-able Security Model

ProcessLite provides a plug-able Security Model that lets you to integrate into existing infrastructure. It supports single sign-on by security context propagation. It supports database and LDAP realms. The Resource information need not be encoded into the process at the time of modeling. The user and role information is resolved at runtime. This helps ISVs to define processes that are generic in nature and not dependent on the availability of specific resource names at the end user client.

Administration

ProcessLite comes with studio based administration and web based administration. The administration console has everything that's needed for general administration and execution management of the instances.

Versioning

ProcessLite is designed in consideration with process evolution and optimization needs. Versioning is one part of the answer. It provides ability to define multiple versions of a process and seamless transitions even with long running instances and also the to schedule transitions for future.

Java Like Expressions

ProcessLite supports java like expressions for ease of use and comprehension. They can be used to assign data to variables, make path decisions invoke methods on object data and for using them as part of the reports and search.

Java Language API

ProcessLite comes with a comprehensive java language API that's easy to extend, customize and integrate. The individual components can be customized. API for the core functionality can be extended. The Single API call integration makes it very easy to integrate.

Highly Scalable

Built on J2EE technology ProcessLite scales to very high volume transactions. It has a highly optimized in built Object Cache Layer. Total OutSource Process Server has high availability and distributable features.

Specifications

ProcessLite is built on open standards there by letting you no vendor lock-in. It is built on Java 1.4 and XML standards and the Total OutSource Process Server supports BPEL4WS.

Total OutSource, Inc.

25W 217 Lake Street
Roselle, IL 60172 USA
Tel: (630) 307-7600
Fax: (630) 582-3700
Email: sales@totaloutsourcing.com
www.totaloutsourcing.com

Copyright ©2004 Total OutSource Inc. All Rights Reserved.
Total OutSource logos, and ProcessLite and other related trademarks belong to Total OutSource Inc in US, India and/or other countries. Other trademarks belong to their respective owners. The information presented in this brochure is summary in nature, subject to change, non contractual, and intended only for general information. Information regarding third party products is provided solely for educational purposes.
